



Company : Beach Petroleum Ltd

Well : Fermat-1

Interval : 896.00 - 1030.13 meters

Created : 20/Dec/2008 7:45:49 AM

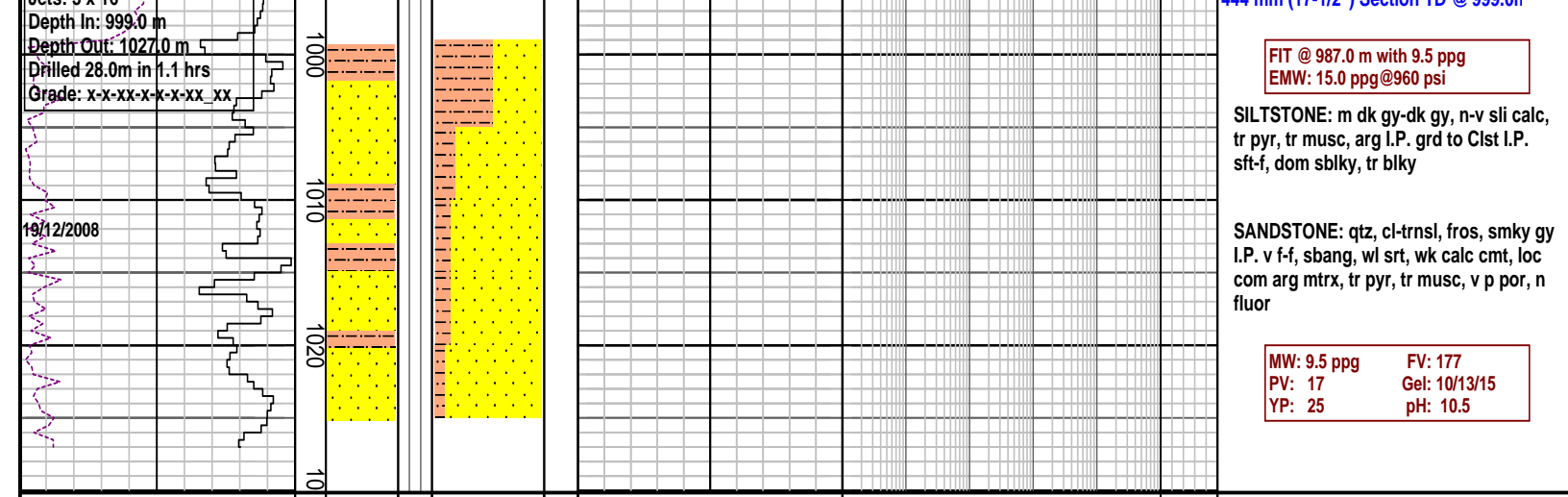


INTEQ

FORMATION EVALUATION LOG

DRILLING PARAM		MD meters	Oil Show P F G	LITHOLOGY %	CORE	TOTAL GAS	CHROMATOGRAPH	Calcmetry	Lithology Description
ROP (m/hr)	WEIGHT ON BIT (klbf)								
200 160 120 80 40	10 20 30 40 50								

WOB: 4-25 Kftlbs RPM: 120-155 GPM: 1200-1210 SPP: 2780-2800 psi		900							Drill with Sea water & Hi-Vis sweeps, Returns to seabed
		910							MD: 906.92m Inc: 0.33° TVD: 906.84m Azi: 214.11°
		920							
		930							
		940							MD: 936.44m Inc: 1.52° TVD: 936.35m Azi: 212.28°
		950							
		960							
		970							MD: 966.55m Inc: 2.74° TVD: 966.44m Azi: 216.55°
		980							
Set 13-3/8" Casing at 987.0 m		990							Drill with KCL-Polymer Mud from 999.0m
NB3: 311mm(12-1/4") Make: Hughes Type: GT-1 Lots: 3 x 16									



FORMATION EVALUATION LOG

DRILLING PARAM	M.D meters	Oil Show	LITHOLOGY %	CORE	TOTAL GAS	CHROMATOGRAPH	Calcmetry	Lithology Description
ROP (m/hr) 200 160 120 80 40 WEIGHT ON BIT (klbf) 10 20 30 40 50	1.500	P F G	INTERPRETED LITHOLOGY					